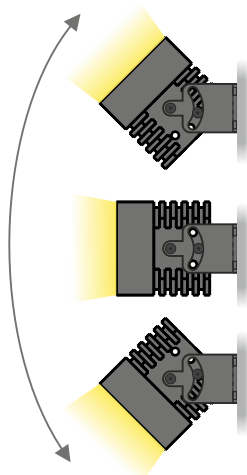


Lampade GES / GES Lamps

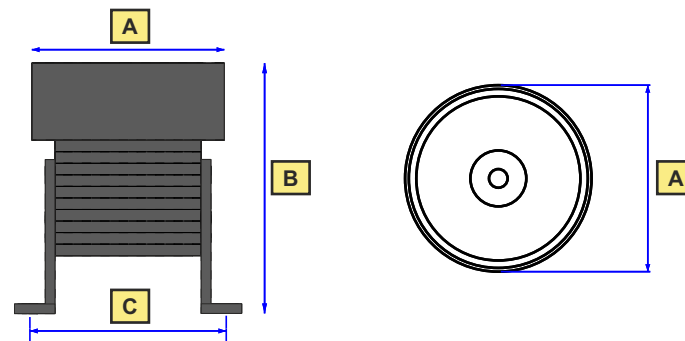
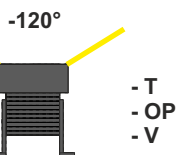
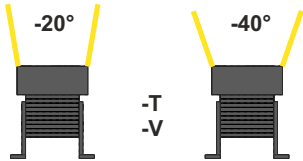
Specifiche standard: bianco freddo 6000k base alluminio, illuminazione a spot - Standard Specifications: 6000K cold white, aluminum base, spot lighting

Mod. GES	Diametro esterno External diameter	Grado di protezione IP Protection Degree	Tensione alimentazione Supply voltage	Corrente alim. standard Standard supply current	Potenza assorbita Power consumption	Flusso luminosità generata tipica Typical luminous flux	illuminazione tipica a 50 cm 50 cm Typical Lighting	Range temperatura lavoro Working temperature range
GES50-6K-20-T GES50-6K-40-T GES50-6K-120-T	50 mm	IP67	24Vdc +/- 10%.	250 mA	6,0 W	900 lumen	7200 lux 3500 lux 900 lux	Da 0° (no frost) a +50°C From 0° (no frost) to +50°C
GES70-6K-20-T GES70-6K-40-T GES70-6K-120-T	70 mm			500 mA	12,0 W	1800 lumen	12.700 lux 9620 lux 1520 lux	
GES90-6K-20-T GES90-6K-40-T GES90-6K-120-T	90 mm			1000 mA	24,0 W	3600 lumen	20.800 lux 16.900 lux 2450 lux	

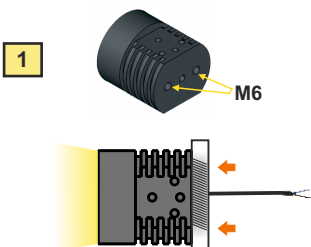
Fissaggio integrato girevole 160°
160° rotating integrated fixing



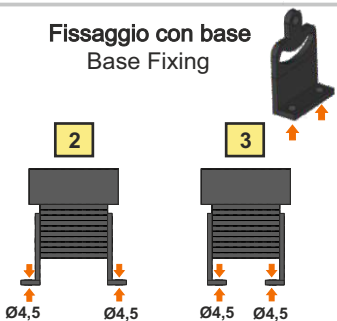
Apertura illuminazione
Beam Angle



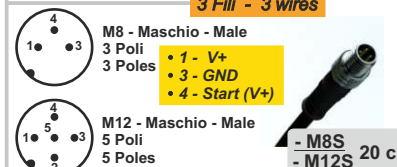
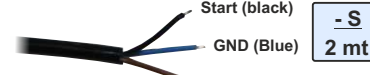
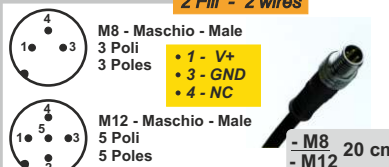
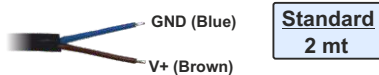
Fissaggio con viti M6
M6 screws Fixing



Fissaggio con base
Base Fixing



Collegamento alimentazione per versione / Supply connection for each version



Dimensioni meccaniche
Mechanical dimensions

	A	B	C
GES50	50 mm	65 mm	51 mm
GES70	70 mm	89 mm	73 mm
GES90	90 mm	121 mm	93 mm

Genesi LUX® a division of
Genesi Elettronica srl



Lampada Led / Led lamp

- Alimentazione: 24 Vdc
Supply: 24Vdc
- Grado di protezione: IP67
Protection degree: IP67
- Uso illuminazione / lighting Use
- Illuminatore sistemi ispezione con telecamere
illuminator for vision systems with cameras



Opzioni GES / GES Options

Ex. Code : GESXX-YY-CCC-AAA-WW1-WW2

GES Code				
Diametro lampada Lamp diameter	Colore Led Led Colour	Corrente per Led Current per Led	Apertura Luce Beam angle	Varianti e opzioni Variants and options
XX	YY	CCC	AAA	WW1 - WW2

-WW1 Varianti coperture Lampada Lamp covers variants	
-T	Copertura Trasparente 3 mm. (GES90 5mm) 3 mm Transparent cover. (GES90 5mm)
-OP	Copertura Opalina 3 mm (GES90 5mm) 3 mm Opaline cover. (GES90 5mm)
-V	Vetro di sicurezza 3mm (GES90 5mm) Safety Glass 3mm. (GES90 5mm)

Diametro lampada Lamp diameter	
GES50	50 mm
GES70	70 mm
GES90	90 mm

Colori Colours	
-6K	Bianco freddo 6000K 6000K Cold white
-4K	Bianco Naturale 4000K 4000K Natural white
-3K	Bianco Caldo 3000K 3000K Warm white
-YY	Custom/ IR / UV / COLOR



GES50-6K-120-T

Corrente per Led Current per led	
- STANDARD	250mA per GES50 250mA per GES50
- STANDARD	500mA per GES70 500mA per GES70
- STANDARD	1000mA per GES90 1000mA per GES90
-CC	Led con pilotaggio diretto in corrente Led with direct driving current
-2A	2A per Led uso impulsivo 2A per Led impulsive use TON max 1/10
-CCC	custom

Apertura luce Beam angle	
-20	Apertura Luce 20° 20° Beam Angle
-40	Apertura Luce 40° 40° Beam Angle
-120	Apertura Luce 120° 120° Beam Angle
-AAA	custom



GES50-6K-20-T

-WW2 Collegamento alimentazione per versione Supply connection per version	
STANDARD	Versione standard cavo 2 poli 2mt standard version with 2mt 2-poles cable
-M8	Versioni -M8 conn. M8 3 poli Maschio cavo 20cm -M8 versions M8 3-poles 20 cm male cable
-M12	Versioni -M12 conn. M12 5 poli Maschio cavo 20cm -M12 versions M12 5-poles 20 cm male cable
-S	Ver. -S (Start/Strobe) Max. current driving of 10mA, 3poles 2Mt Cable
-M8S	Ver. -M8S (Start/Strobe) Max. curr. driving of 10mA, M8 3poles 20cm Male Cable
-M12S	Ver. -M12S (Start/Strobe) Max. curr. driving of 10mA, M12 5poles 20cm Male Cable
-5M	cavo 2 poli 5mt / 5mt 2 poles cable
-5MS	cavo 3 poli 5mt / 5mt 3 poles cable
-WW	Versioni custom Custom versions

NORMATIVE / STANDARDS

Immunità elettromagnetica - EMC immunity :	EN 61547:2009
Emissione elettromagnetica - EMC emission :	EN 55015:2006
Rischio fotobiologico - Photobiologic risk :	EN 62471:2010 GLS: RISK EXEMPT
Assessment of lighting equipment related to human exposure to electromagnetic fields	EN 62493:2010

ATTENZIONE / WARNING

- Prodotto elettrico per uso professionale, può essere installato solo da personale qualificato.
Electrical device exclusively for professional use. Installation can be done by qualified personnel only.
- In caso di danneggiamento del cavo di alimentazione, la sostituzione del medesimo deve essere eseguita esclusivamente presso la casa madre.
In case of power supply wire damage, its replacement has to be done at the head office exclusively.
- Perdita di GARANZIA a causa di uso improprio e manomissione del prodotto.
Warranty loss in case of inappropriate use and tampering.

Design & Production
Made in Italy



Genesi LUX® a division of

Genesi Elettronica srl

V. Bachelet, 3 - 41057 Spilamberto - MODENA -
Tel. 059785566 - info@genesi-lux.it - www.Genesi-lux.it



rev. 01/19